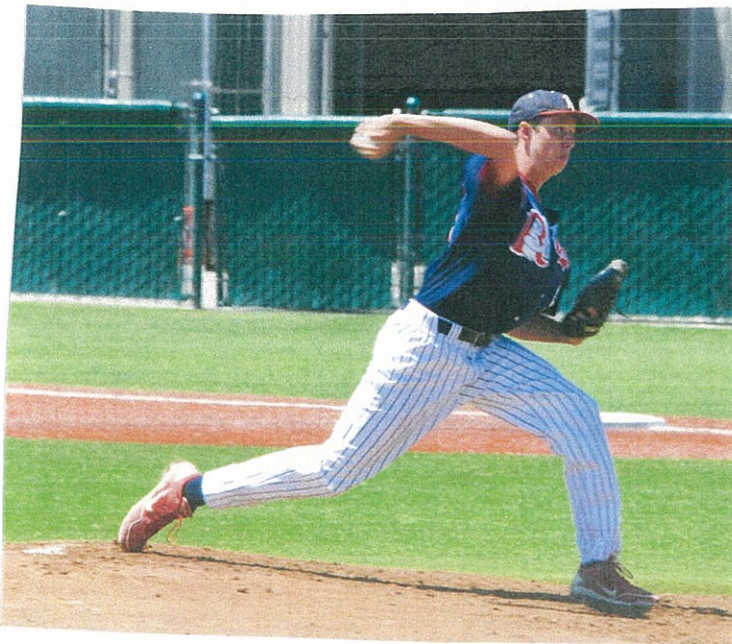


Austin Atkerson, Connor Bush lead Blues to 2-0 Win

Starting pitcher Austin Atkerson threw six strong innings and held the Black team to no runs. Atkerson was dominant as he only gave up 3 hits, a single by Sully Cauley, a double by Nick Cibula, and a single in the sixth inning by Michael Riedeman. Daniel Coleman came in and threw 3 quality innings to preserve the shutout. The Blue team scored one of their runs in the first inning. Garrett Hampson led off the game with a double. He stole third base and then Joey Clark drove him in with a ground ball to the shortstop. The second Blue run happened in the seventh inning. Leadoff hitter, Connor Bush, hit an infield single by running a hard 90 and beating out the jam shot ground ball. Bush then advanced to second base on a deep fly ball by Kurt Hillson. Joe Bath then ripped a single down the left field line to drive in Bush.

The Black pitching staff also turned in an outstanding performance on the mound. Starter Graham Macmillan was strong in his five innings. Macmillan has pitched well throughout the fall with his ability to locate his fastball and a hard breaking curveball. Jacob Wait, a left-handed pitcher with good movement on his pitches also threw well on Friday. He pitched three strong innings and only gave up 2 hits and 1 run. Drew Winkelmaier pitched the top of the ninth inning. Game Two will be played this Saturday with Demi Small getting the start for The Blue Team and Brian Ring for the Black Team.



World Series Game 1 Boxscore

BLUE						BLACK					
Player	AB	R	H	RBI	QAB	Player	AB	R	H	RBI	QAB
Hampson	4	1	1	0	1-4	Riedeman, M.	3	0	1	0	2-4
Clark, Joey	4	0	0	1	2-4	Clark, Jake	4	0	0	0	1-4
Atkerson	4	0	0	0	1-4	Macmillan	3	0	0	0	1-4
Bouchard	4	0	1	0	1-4	Peterson	3	0	0	0	1-3
Bush	4	1	2	0	2-4	Cauley	3	0	1	0	1-3
Hillson	2	0	0	0	2-3	Watland	3	0	1	0	1-3
Riedeman, H.	1	0	0	0	0-1	Cibula	3	0	1	0	1-3
Bath	3	0	1	1	1-3	Haines	2	0	0	0	0-2
Ristine	1	0	0	0	0-1	Muntean	1	0	0	0	0-1
Small	2	0	0	0	0-2	Miskow	1	0	0	0	0-1
Thomas	1	0	0	0	0-1	Wait	1	0	0	0	0-1
Wilmot	2	0	1	0	1-2	Winkelmaier	1	0	0	0	0-1
Kelley	1	0	0	0	0-1						
TOTALS	33	2	6	2	11-34	TOTALS	28	0	4	0	8-30
PITCHER	IP	H	R	K	BB	PITCHER	IP	H	R	K	BB
Atkerson (W)	6	3	0	4	0	Macmillan	5	3	1	5	0
Coleman (S)	3	1	0	1	2	Wait	3	2	1	0	0
						Winkelmaier	1	1	0	1	0